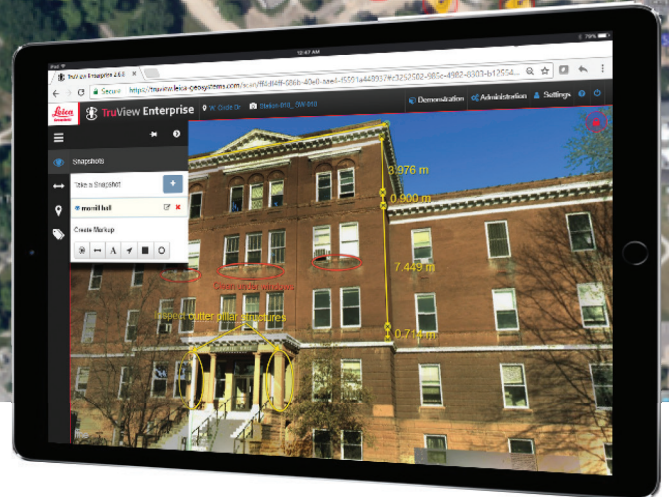
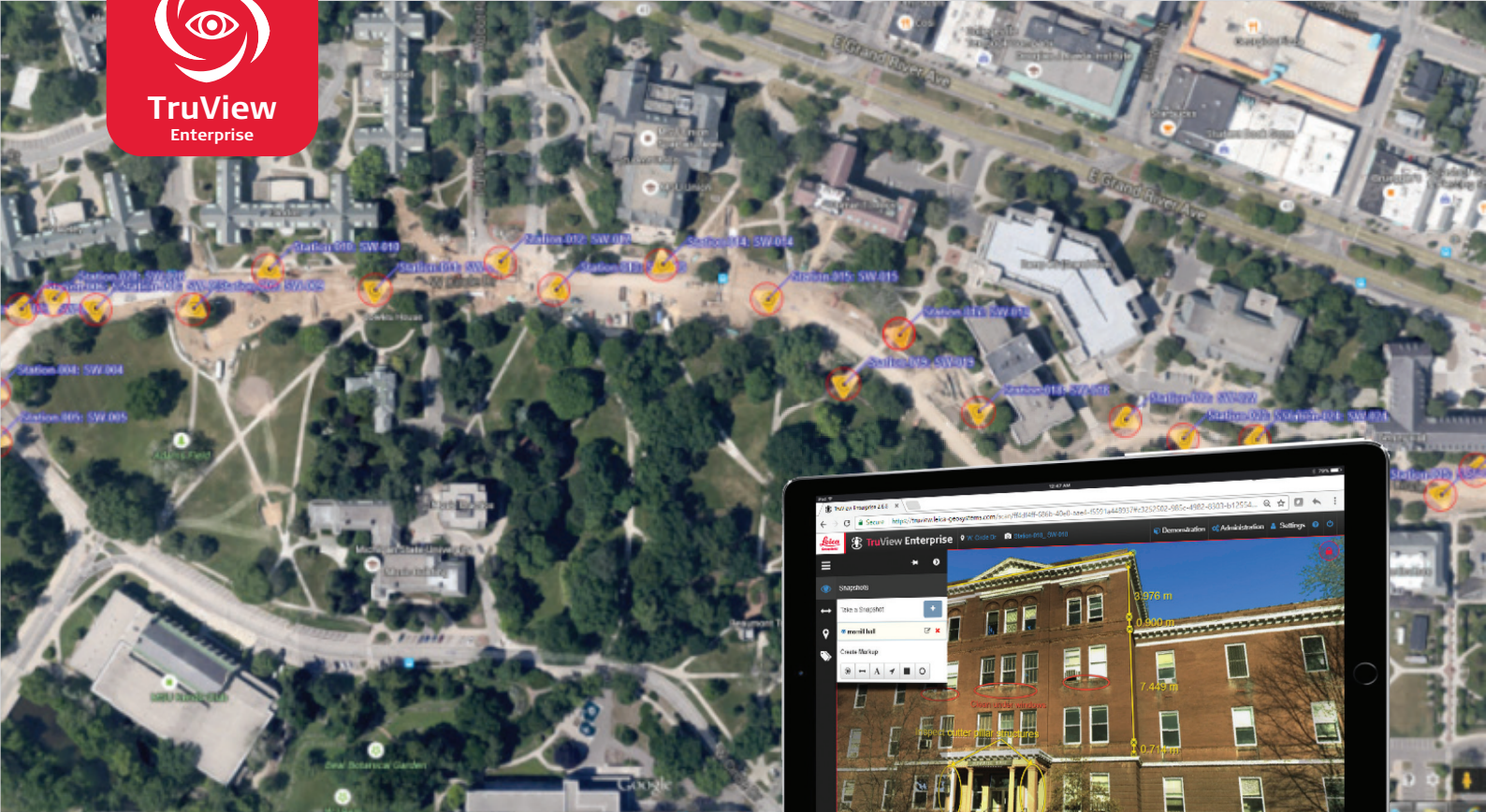


# Leica TruView Enterprise

## Digital reality experience in your own private cloud



### Speed to collaborate in real time

Leica TruView Enterprise is the quick and easy way to share your digital reality data with anyone, regardless of their familiarity with 3D. Upload TruView data sets via a quick drag and drop to share with colleagues in the field or clients around the world. Snapshots, markups and notes are saved and synced in real time, allowing you to collaborate with users via the TruView experience.



### Scale to accommodate your data

TruView Enterprise scales to meet your needs. 10 base portals can be assigned to each client. Each portal can contain an unlimited number of sites and users allowing you to bundle numerous projects under a single portal. Robust user controls including portal access and roles let you control who sees what and who can change and edit data to ensure its integrity.



### Simple to share and navigate

TruView Enterprise offers your clients a free, no-installation required way to view and easily interact with their data from anywhere. Simple, point-and-click navigation, snapshots and markups lets anyone experience the scene as if they were there - no CAD or 3D skills required. Even GeoTags and Hyperlinks are as simple as a click or tap of the finger on touch screen devices. TruView Enterprise is localised in a variety of languages to accommodate global users.

leica-geosystems.com



- when it has to be **right**

**Leica**  
Geosystems

# Leica TruView Enterprise

## Key features and functionality



### MANAGE PORTALS

Add, edit or deactivate portals and edit policies all from your admin account to ensure security. With a base of 10 portals, you have total control from one interface over the publicity or privacy of each unique portal.



### MANAGE USERS

A robust user management interface lets you manage user access on a portal-by-portal basis and assign roles or deactivate users entirely at the end of a project. Manage open requests from new clients and reset passwords. Even check in on current active user sessions. Compatible with LDAP and Active Directory systems.



### CUSTOMISATION

Customise your site to suit your needs. Create or edit your custom site address and upload a logo to welcome your clients to your page. Control your visitor experience by setting your homepage to a login screen or public site gallery to market your past work to prospective clients. Software Development Kit (SDK) available for advanced customisation.



### BACKUP

Create a backup of one or all portal's data including scan and site data, user data or both. Back ups are automatically saved within your admin account for you to restore or download as needed. If you ever need to restore a previous backup, you can drag and drop an externally archived TruView file or use the one saved within your system.



### LICENSING

Manage all aspects of your license including its status and expiration date and number of portals and users so you know when it's time to scale up. Even change your license server to easily redirect your data. TruView Enterprise is available in a perpetual license, yearly subscription or multi-week time-limited license to suit your needs.



### UPDATES

Stay up-to-date to keep your system running smoothly. Confirm versions and the status of updates. Check for updates and download a new version from your admin site with a single click.

### SYSTEM REQUIREMENTS

**General information** Implemented as a Virtual Image to be deployed on internal (in-house) network server or at an appropriate Internet Service Provider (ISP Hosted) such as Amazon AWS, Azure, etc.

**In-house network** Install Virtualbox, VMware or Hyper-V virtual image.

**Supported browsers** Chrome 44, Firefox 39, IE 11, Safari 8, IOS Safari 8.3, Android Browser 40, and Chrome for Android 42, or newer. Browsers must be a version sufficient to support WebGL and HTML5.

**Supported devices** Desktops, laptops, tablets, smart phones.

### CLIENT/VISITOR FEATURES

**GeoTags** GeoTags published from Cyclone as HotSpots. Presented in proper spatial location and in a table format with search/sort and click through navigation. Or created on-the-fly with file uploads or linking to external sources.

**Markup** Rectangle and Circle/Ellipse, Leader line with arrowhead, Text, Point-to-point dimension label, Coordinate location dimension label, Markup created by "User name" Markup stamped with time/date, Markup properties control of colour, font, transparency, line thickness, units of measure.

**Hyperlinks** Add hyperlinks to any uploaded file, valid local network application, or web linkable location. Hyperlinking available for all markup shapes, leaders, text, and GeoTags.

**Collaboration** Saved views and markup sets import/export, default property settings import/export.

**Snapshots** Automatically saved views per markup set, recallable. Presented in proper spatial location and in a table format with search/sort and click through navigation.

**Modern interface** Adaptive interface morphs to "best fit" current device, touch controls for zoom, pan, navigate and markup on touch capable devices.

**Language support** Automatic sensing with manual override. Available in over 10 languages.

Copyright Leica Geosystems AG, 9435 Heerbrugg, Switzerland. All rights reserved. Printed in Switzerland - 2017.  
Leica Geosystems AG is part of Hexagon AB. 868498en - 11.17

**Leica Geosystems AG**  
Heinrich-Wild-Strasse  
9435 Heerbrugg, Switzerland  
+41 71 727 31 31

- when it has to be **right** 